

Historic, Archive Document

Do not assume content reflects current scientific knowledge, policies, or practices.

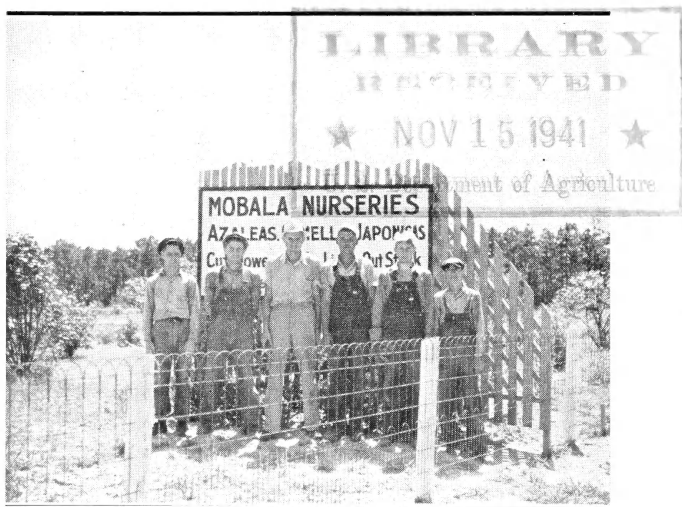
62.01

WHOLESALE LIST



FALL 1941

SPRING 1942



Some of the "Boys"

AZALEAS . CAMELLIAS

GARDENIAS

BROAD LEAVED EVERGREENS

MOBALA NURSERIES

GEO. W. PEARSON, Jr.

MOBILE, ALABAMA

**Should your needs require additional
Price Lists, please write and we will
be glad to favor you.**

PLEASE NOTE

Prices in this Wholesale List cancel all previous ones and are subject to change without notice.

CONDITIONS OF SALE

Terms—All prices F. O. B., Mobile, Ala. We allow 3% discount for cash with order. New accounts must furnish references and allow time for investigation. We DO NOT ACCEPT C. O. D. ORDERS, without $\frac{1}{4}$ deposit.

Prices—5 of the same size and variety at the 10 rate. 25 at the 100 and 250 at the 1000 rate.

Discounts—Besides cash discounts, we give very attractive discounts on carload orders and B. & B. stock at the Nursery.

Shipping—We ask our customers to furnish complete shipping instructions with orders. Express, Freight or Truck-line.

Guarantee—We take great care to have our stock true to name, but we are not liable for more than the original invoice cost, and we accept orders on the condition that they shall be void should any injury befall stock over which we have no control.

Specimen—All plants under this listing are shapely and in the case of flowering plants, with buds. Plants selected at the Nursery shall be valued as to appearance.

References—The First National Bank of Mobile, Ala. and leading nurseries and florists of the United States.

It is our one desire to fill your orders just as we would wish ours to be filled and we pack our shipments safely and securely with the utmost care.

NOTES

on

FORCING AZALEAS

Pot in either leafmold or 1/3 peat and 2/3 acid soil. For early forcing, azaleas must be started by November 1st in an unshaded house. The best temperature is from 50 to 60 degrees nights, and up to 80 during the day.

Before forcing begins make certain that the roots are thoroughly saturated. Leading growers recommend placing roots under water until all air bubbles escape, and then cut a slit several inches deep into the roots to make sure they are saturated. Do not fertilize an azalea that is to be forced. Pinch all new growth that starts below the buds. Syringe the foliage several times daily in addition to usual watering.

In greenhouse temperatures, azaleas, like any other plants, may become infested with thrips or red spider and it pays to watch them carefully and when necessary spray regularly.

If started in early November the buds should begin to swell in 30 days and if they do not, increase temperature. When first petals open do not syringe and keep in shaded house, which will add greatly to their saleable period.

We have testimonials from many thousands of satisfied customers throughout the country and we believe a trial order of our quality azaleas will add you to our list.

MOBALA NURSERIES
Mobile, Alabama

AZALEAS

The name is from the Greek word azaleos, meaning dry, because their discoverer believed them to grow in dry locations. However, because they are shallow rooted, the opposite is true and they require an abundance of water.

There are three cardinal rules to remember when growing Azaleas:

1. Water frequently in dry weather.
2. Mulch heavily with oak leaves or peat moss to protect the roots and furnish humus.
3. Fertilize sparingly three times a year during the Spring and early Summer.



Azalea Lath House

There has been such an increase in both commercial and private Azalea plantings in the last few years that information as to the prevention and control of pests is eagerly sought. A complete brochure may be obtained by writing the Agricultural Experiment Station of the Alabama Polytechnic Institute for Circular 84. Or, if preferred, we shall be glad to furnish helpful information free of charge upon description of the symptoms of infected plants.

Visitors from all points of the United States come to our city each year to see the beauty of our Azalea Festival and to make pilgrimages to the finest Azalea and Camellia collection in the world-famed Bellingrath Gardens. To nature lovers everywhere we extend a cordial invitation to enjoy their beauty this season.

The Indica variety, Pride of Mobile, is the outstanding feature in this section. Some plants are over 100 years old, measuring 20 feet in height and 40 feet in spread.

INDICA AZALEAS

Florists and nurserymen have an unusual opportunity to profit by planting some of the Indica Azaleas around their homes and business grounds, because few plant lovers can resist the lure to buy when they see them in bloom. We have selected and grown only the choicer varieties for the benefit of our customers, who can select with assurance from the following list.



10-12" & 12-15" Krume Azaleas

Daphne Salmon—Flowers a distinctive shade of Salmon, medium sized. A rapid grower, always compact and of rather upright habit.

Elegance—Light pink flowers and the earliest one to bloom. Grows upright, but not compact and thus requiring a little trimming for a bushy specimen.

Fielders' White—A large flowered, pure white variety, which is fairly compact and unusually hardy. Blooms early and works in well with other colors.

Formosa—The largest flowered purple variety. An extremely compact plant, even without trimming, and the fastest grower among the Indica Azaleas.

Indica Alba—Probably the best known of the pure white Indica Azaleas. Not as hardy as Fielders' White and more upright in growth but its preference is due to the fact that it blooms over a much longer period of time than any other white Azalea.

Indica Rosea—A large flowered white with a rose throat with numerous variations in the two colors on the same plant, making it very unusual. It has the longest period of blooming of any Azalea. It grows rather upright, having large, rounded leaves.

Iveryana—Peppermint colored flowers, white, striped with pink. Blooming late and over a long period, it never fails to attract attention due to its very unusual color and many variations thereof.

Lalaceana—Large, light lilac blooms. A strong, vigorous, upright grower, with large rounded, hairy leaves.

Phoenicia—A dwarf form of Formosa. With flowers a trifle smaller but the same color as that variety. Used wherever an extremely compact and a not too rapid grower is wanted. In compactness it is almost like a Kurume.

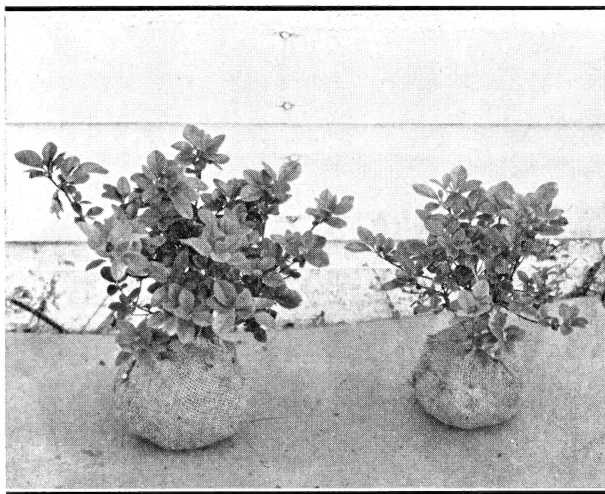
Pride of Mobile—Large watermelon pink flowers, truly an outstanding color. Formerly called Watermelon Pink, it is now very aptly named for the city in which it originated. Blooming in mid-season and a compact grower it has proven the most popular of any Indica known.

Vitata Fortuni—Lavender and white, sometimes either pure white or pure lavender flowers on the same plant. A very upright and rapid grower, it is very hardy. Blooms early and long.

William Bull—Small, double redish orange flowers. It is too upright for specimen use and is only advised for backgrounds or mass effects on large landscapes.

Prices of Azalea Indica	Each	10	100	1000
6- 8 in. CT, lining out . . .		\$.80	\$ 6.00	\$50.00
8-10 in. with buds		2.50	20.00	
10-12 in. with buds	\$.40	3.00	25.00	
12-18 in. with buds50	4.00	35.00	
18-24 in. with buds65	6.00	55.00	
2- 3 ft. with buds	1.35	12.50	115.00	

Prices on larger quantities gladly quoted on application.



6-8" & 8-10" Kurumes

HARDY JAPANESE KURUME AZALEAS

Finest forcing Azaleas for Florists

See instructions for forcing on back cover.

Kurume Azaleas are a race developed in Kurume, Japan from forms of *R. Obtusum*. Most of them are hardy from Philadelphia southward and some do well as far as New York

with Winter protection. We grow thousands each year to be used as Florists pot plants and nothing is more satisfactory for the purpose, because they are dwarf and compact, bloom when very small and force easily. Nothing makes a finer or more beautiful border than these Kurume Azaleas and due to the fact that there is a wide range of color, there are many color schemes which can be used.

For growing out doors use same instructions for cultivation found under Indica Azaleas.

Christmas Cheer—Bright red flowers of the hose in hose type. Leaves are a dark glossy green and it is a fairly compact grower. Its color is very outstanding and the only one of its particular shade known.

Coral Bells—Light pink, hose in hose, bell shaped flowers. The easiest forced of all the Kurumes. Its color and forcing qualities make it among the first in popularity.

Double Mauve—White flowers with a lavender tint on the edge of each petal, hose in hose type. It is very compact and a rapid grower. Blooming very profusely. Its unusual color makes it very desirable and it is well suited for all uses.

Flame—Bright red single flowers, which literally covers the plant when in bloom. It is a very upright grower with small leaves and takes severe pruning to make a compact specimen. Blooms early and is very hardy.

Hinamoyo—Delicate pink flowers and in habit of growth and blooming qualities it is very much like Flame. Its color is very pleasing and it is being more widely used as it becomes better known.



Indica, Kurume and Camellia Liners

Hinodegiri—Red hose in hose flowers of a large size. Its blooms cover the entire plant even when very small and it is a very compact grower. These qualities, along with the fact that it is the hardiest of the Kurumes make it the most popular variety. It is one of the best for pot plant purposes and also very showy when grown outdoors.

Macrantha, Single—Clear pink and salmon flowers, blooming over a long period. Extremely hardy and compact and a dwarf grower. Making it nice for pot plant purposes.

Macrantha, double—Pink flowers, hose in hose type. Extremely hardy and blooms over a long period of time. Desirable for this reason.

Salmon Queen—Large salmon flowers which are single. A compact rapid grower with large rounded leaves, it is a very profuse bloomer and a very satisfactory pot plant.

Snow—Pure snow white flowers, having the largest blooms of any Kurume. It is hose in hose and with pointed petals makes the flowers star shaped. Its large flowers and heavy bloom make it a very aptly named variety. A very compact grower with large glossy leaves, it is the favorite white Kurume.

Sweet Brier—Light pink, medium sized single flower. Dark green glossy leaves and a very rapid grower. The unusual shade of the flower highly commends this variety.

Prices of Kurume Azaleas	Each	10	100	1000
4- 6 in. CT, lining out . . .		\$.80	\$ 7.00	\$60.00
4- 6 in. with buds	\$.35	3.00	25.00	
6- 8 in. with buds45	4.00	35.00	
8-10 in. with buds55	5.00	45.00	
10-11 in. with buds70	6.50	60.00	
12-15 in. with buds90	8.00	70.00	
15-18 in. with buds	1.25	10.00	80.00	

Prices on larger quantities gladly quoted on application

RARE CAMELLIAS

This year we are able to offer our customers a few of the choicer **RARE CAMELLIA JAPONICAS**. Scarcity alone does not determine their value. The ones we list are by far the most beautiful obtainable anywhere. Since our stock is very limited, we can sell them only with the Standard sorts, with no quantity discounts and no more than a few plants to each customer. This group should be in every collection. Order early.



18-24" & 2-3' Camellias, B & B

BRILLIANT—Full double, very symmetrical flower of the most intense shade of scarlet of any camellia, making it a very aptly named variety.

6- 8 in. B. & B.	\$.50 each
8-12 in. B. & B.	1.00 each
12-18 in. B. & B.	2.00 each

COLONEL FIERY—(Wm. S. Hasty) Glowing rich crimson flower. Full double, 5-6 inches across, with many petals opening into a full, broad, imbricated bloom.

3- 5 in. 2¼ in. pots	\$.75 each
6- 8 in. B. & B.	1.50 each
8-12 in. B. & B.	1.75 each
12-18 in. B. & B.	2.50 each
18-24 in. B. & B.	4.50 each
2- 3 ft. B. & B.	6.50 each



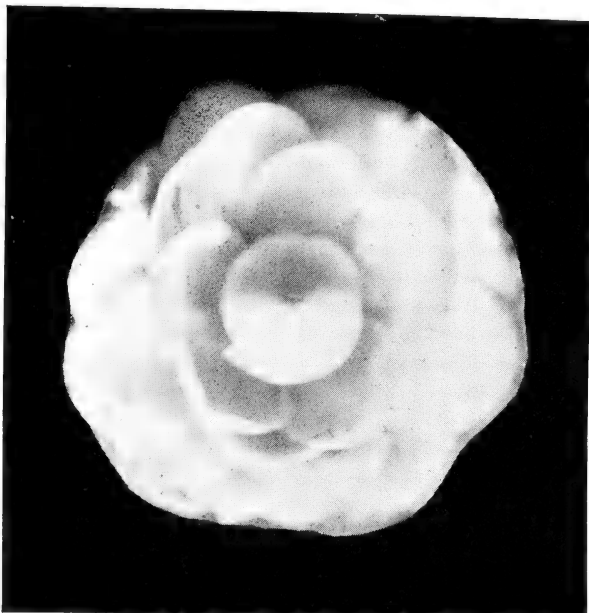
*8-12", 12-18" & 18-24" Camellias
Shown with 5" Pot*

EMPEROR OF RUSSIA—A brilliant scarlet flower with a few tiny white flecks. Large and very double shape, with large petals around the outside and smaller, recurved petals in the center, which is solid and high centered.

3- 5 in. 2¼ in. pots	\$.75 each
6- 8 in. B. & B.	1.50 each
8-12 in. B. & B.	2.50 each



Herme



Mathotiana Alba

FANNY BOLLIS—A huge brilliant scarlet flower, semi-double in shape, blanced with white.

3- 5 in. 2¼ in. pots	\$.75 each
6- 8 in. B. & B.	1.50 each
8-12 in. B. & B.	2.50 each
12-18 in. B. & B.	3.50 each

IMPERATOR—A very beautiful peony shaped flower, rich red color, often 4 or more inches in diameter. A good strong grower of upright habit.

12-18 in. B. & B.	\$3.50 each
18-24 in. B. & B.	5.00 each
2- 3 ft. B. & B.	7.50 each

LADY HUME'S BLUSH—Very double and symmetrical bloom, of a delicate flesh color. One of the most unusual of all Camellias.

6- 8 in. B. & B.	\$.75 each
8-12 in. B. & B.	1.50 each
12-18 in. B. & B.	3.00 each

LAUREL LEAF—(El Tremendo) Large pink, variegated blooms, full double. Long narrow leaves. A real collector's item.

8-12 in. B. & B.	\$ 3.00 each
12-18 in. B. & B.	7.50 each
18-24 in. B. & B.	12.50 each
2- 3 ft. B. & B.	17.50 each

MATHOTIANA ROSEA—A huge, full double, rose colored flower which is a highly desirable sport of Mathotiana Alba.

6- 8 in. B. & B.	\$1.00 each
8-12 in. B. & B.	2.00 each
12-18 in. B. & B.	3.00 each
18-24 in. B. & B.	5.00 each

PURPLE EMPEROR—(Purple Dawn)—Extremely large, rose shaped flowers, which turns purple as it stays in bloom. Large, glossy leaves. Compact growth.

3- 5 in. 2¼ in. pots	\$1.00 each
----------------------------	-------------

VICTOR EMMANUEL—Huge, velvety red, peony form flowers. Large, glossy leaves. It blooms late in the season.

3- 5 in. 2¼ in. pots	\$1.00 each
6- 8 in. pots	1.75 each
8-12 in. B. & B.	3.00 each
12-18 in. B. & B.	7.00 each
18-24 in. B. & B.	12.00 each

CAMELLIA JAPONICAS

Camellias with advanced flower buds, should be kept in a very cool temperature, not more than 50 degrees. They prefer a well drained soil, with a slight acid reaction. Cottonseed meal, with acid phosphate, is good. Also rotted cow manure, muriate of potash, tankage and sulphate of ammonia, all of which are acid in reaction. There are very few diseases attacking Camellias. Sometimes, however, the foliage is attacked by scale. When this occurs, spray with Volck, 1-50 and be sure to spray underside of the leaves. Their use as cut flowers is increasing steadily, and due to the heavy demand, we ask our customers placing large orders to do so early before they are sold out.

GROUP 1 CAMELLIAS

Alba Plena—This well known camellia is one of the best for cut flower purposes. Snow white color, full double, blooms early and flowers from 3 to 5 in. in diameter.

Belle Romania—Most attractive of variegated camellias. Flowers 4 inches across of light pink, profusely striped and splashed with crimson. Very double, free bloomer.

Chandleri Elegans—Largest flower of all, sometimes 7 inches across. Peony type, cherry red with white variegation. Blooms even when very young from February through March. Compact.

Enrico Bettoni—Salmon pink flowers, very large size, varying from semi-double to peony in form. Fast grower. Free bloomer.

Herme—Pink and red variegated with white margin, between semi-double and peony in shape. Has faint scent. One of the most popular and among the very best.

Monarch—Deep pink flowers of enormous size. Many petals and stamens in clusters inside of huge outer petals. Peony type, beautiful foliage and compact grower.

Pink Perfection—Shell pink color. Blooms early and for a long time. Starts blooming when very young and blooms very profusely. Full double. Most popular for cut flowers.

Prof. C. S. Sargent—Bright scarlet colored flowers which measure about 3 to 5 inches across. Peony type. Rated very highly.

Prices of Group 1 Camellias	Each	10	100
3- 5 in. 2¼ in. pot		\$ 1.50	\$ 12.00
6- 8 in. B. & B.	\$.35	3.00	25.00
8-12 in. B. & B.45	4.00	35.00
12-18 in. B. & B., branched, no buds	.60	5.50	50.00
18-24 in. B. & B., branched no buds	1.25	10.00	85.00
24-36 in. B. & B., branched, no buds	1.50	12.50	100.00

SPECIMEN PLANTS:

Our Specimen Camellias are shapely and well budded.

18-24 in. B. & B., with buds	\$2.25	\$20.00
24-30 in. B. & B., with buds	3.50	30.00
30-36 in. B. & B., with buds	4.50	40.00
3- 4 ft. B. & B., with buds	6.50	60.00



Pink Perfection

GROUP II CAMELLIAS

Abby Wilder—White with tiny splashes of pink. Peony type flower, medium to large. Good grower and compact habit.

Anna Frost—Flesh pink with deeper stripes of rose, very double, about 3 to 5 inches across. Heavy bloomer.

Countess of Orkney—Light pink with stripes of red, very double and blooms heavy even when small. Compact habit.

Duke de Orleans—White with flecks of pink, peony type. It is a good fast grower of compact habit.

Elizabeth (Tutonia)—Pure white, sometimes pink flowers, very double with petals crinkled at tip. Leaves thick, dark green. A strong grower and free bloomer.

Gloire des Nantes—Large cerise flowers, with center petals twisted. Extra large, dark green leaves.

Jarvis Red—Deep blood red, semi-double, dark green leaves. Good grower of compact habit.

Kellintonia—Orange red striped or blotched with white, peony type. Heavy and prolific bloomer.

Mathotiana Alba—White flowers, very double, and large sized, with large light green leaves. Blooms late.

Nobilissima—White flowers, petals mixed with stamens. Very good grower and a prolific bloomer.

Pope Pius IX—(Prince Eugene Napoleon)—Large sized scarlet flowers. Very double. Blooms in mid-season. Compact grower.

Rose Emry—Crimson flowers of medium size . . . blooms early . . . vigorous grower . . . one of the best for cut flowers.

Sacco—Rose with lavender and white spots. Full peony type . . . mid-season bloomer . . . very unusual variety.

Tri-Color—Sometimes red and sometimes white on same bush but usually striped with red and white . . . semi-double . . . large flowers.

Price of Group II Camellias	Each	10	100
3- 5 in. 2¼ in. pots		\$ 1.20	\$10.00
6- 8 in. B. & B.	\$.30	2.50	20.00
8-12 in. B. & B.40	3.00	25.00
12-18 in. B. & B. branched, no buds	.55	4.50	40.00
18-24 in. B. & B., branched, no buds	.80	7.00	65.00
2- 3 ft. B. & B., branched, no buds	1.15	10.00	85.00

SPECIMEN PLANTS:

18-24 in. B. & B., with buds	2.00	17.50
24-30 in. B. & B., with buds	2.50	20.00
30-36 in. B. & B., with buds	3.50	30.00
3- 4 ft. B. & B., with buds	5.00	45.00

GROUP III CAMELLIAS

Bealii Rosea—Deeper shade of pink than Pink Perfection but the flowers are about the same shape and size. Compact grower.

Dixie—Rose pink flowers which are of medium size and very double . . . very hardy and blooms early.

Lady Campbell—Red flowers, very double and large size, blooms very freely and is very hardy.

Sarah Frost—Rose red flower . . . very double . . . good compact grower. It is a free bloomer and one of the best for cut flowers.

Prices of Group III Camellias	Each	10	100
3- 5 in. 2¼ in. pots		\$ 1.00	\$ 8.00
6- 8 in. B. & B.	\$.20	1.75	15.00
8-12 in. B. & B.30	2.50	20.00
12-18 in. B. & B., branched, no buds	.45	4.00	30.00
18-24 in. B. & B., branched, no buds	.70	6.00	50.00
2- 3 ft. B. & B., branched, no buds	.90	8.00	70.00

SPECIMEN PLANTS (with buds)

18-24 in. B. & B., with buds	1.50	12.50
24-36 in. B. & B., with buds	2.00	17.50
3- 4 ft. B. & B., with buds	4.00	35.00
4- 5 ft. B. & B., with buds	6.00	55.00
5- 6 ft. B. & B., with buds	8.00	75.00

CAMELLIA SASANQUA

Sasanqua is very similar to camellia japonica, but it is a faster and looser grower. It blooms in the latter part of September and continues until November. It is used quite extensively for grafting.

Mineno-Yuki—(Snow on the Mountain) Double white, peony type with an ice scent and it blooms freely at an early age.

Pink and White Variegated

Rosea—Pink.

Single White

Prices on Camellias Sasanqua	10	100
4- 6 in., lining out	\$1.00	\$ 8.00
6- 8 in., CT	1.50	10.00
8-12 in., CT	1.75	12.50

GARDENIAS

Gardenias are one of our specialties, and we grow them without nematodes or canker in sterilized soil.

We specialize in rooted cuttings and offer your selection of any of the gardenias we list, at the following price:

\$25 per 1000 \$200 per 10,000

We must have your order before propagating, which is early March, for delivery shortly thereafter.



Gardenia Veitchii, 5 in.

GARDENIA VEITCHII—Veitchii can be forced in the greenhouse any time from November to April. Medium sized, double flowers and one of the heaviest bloomers even when very small. Veitchii in the greenhouse for forcing enable florists to have fresh cut flowers any time.

	Each	10	100
6- 8 in. 2¼ in. pot		\$1.00	\$ 8.50
3 in. pot		1.75	15.00
5 in. pot, extra heavy	\$.50	4.00	35.00

Gardenia Florida—Well-known cape jasmine of the South which in this section has proven hardier than any other variety. Leaves are exceptionally large and glossy, making it an excellent landscape gardenia.

	Each	10	100
6- 8 in., 2¼ in. pot		\$1.00	\$ 8.00
8-12 in. CT		1.50	12.00
12-18 in. CT		2.00	17.50
2- 3 ft. B. & B., specimen	\$1.00	8.50	75.00

Gardenia Fortunei—Everblooming, hardy. Large, dark, shiny green leaves, large double flowers. Blooms in early spring and usually blooms again in late summer.

	Each	10	100
6- 8 in., 2¼ in. pot		\$1.00	\$ 7.50
12-18 in. CT		2.00	15.00
15-24 in. B. & B., specimen	\$.75	6.50	50.00
2- 3 ft. B. & B., specimen90	8.50	75.00

Gardenia Hadley—Same size flower as Belmont variety. Large and double, hardy and can be forced in greenhouse.

	Each	10	100
6- 8 in., 2¼ in. pot		\$ 1.00	\$ 7.50
8-12 in., CT		1.75	12.00
12-18 in., CT		2.50	17.50
15-24 in. B. & B., specimen	\$1.00	8.00	60.00
2- 3 ft. B. & B., specimen	1.50	12.50	100.00

Gardenia Mystery—A recently introduced variety which has an extremely large flower and has proven hardy in our section. The excellent growth and large flower makes it very desirable.

	Each	10	100
6- 8 in., 2¼ in. pot		\$1.00	\$ 7.50

Gardenia Radicans—Dwarf cape jasmine, grows not more than 1 foot high with a spread of 3 to 4 ft. Creeping habit, small double white flower. It is the ideal plant for rock gardens and borders.

Rock	Each	10	100
4- 6 in., CT		\$.50	\$ 4.00
6- 8 in., CT70	6.00
8-12 in., CT		1.00	8.00
12-15 in., CT	\$.65	5.00	45.00

BROAD LEAVED EVERGREENS

Legends: S-Seedling, C-Cutting, T-Transplanted once, TT-Twice Transplanted, B. & B.-Balled & Burlapped.

Abelia Grandiflora—Fine old southern shrub, making an excellent hedge plant which is literally covered with small, pinkish white flowers for a long time.

	Each	10	100
6- 8 in., CT		\$.60	\$ 5.00
8-12 in., CT70	6.00
12-18 in., CTT, Field Grown		1.00	9.00
18-24 in., CTT, Field Grown		1.50	12.50

Berberis Thunbergii Atropurpurea (Red leaved Japanese Barberry)—Our cuttings are selected from the very brilliant red foliated plants and make a very uniform hedge.

	Each	10	100
6- 8 in., CT		\$.60	\$ 5.00
8-12 in., CT		1.00	8.00

Buxus Harlandii—An extremely dwarf box with bright green leaves. Introduced by U. S. Government.

	Each	10	100
2¼ in. pot		\$1.00	\$ 8.00

Buxus Japonica (Japanese Boxwood)—Fast growing boxwood with light green, round leaves.

	Each	10	100
4- 6 in., CT		\$.60	\$ 5.00
6- 8 in., CT80	6.00
8-10 in., CT		1.50	12.50

Buxus Sempervirens (English Boxwood)—Slow growing boxwood, with dark green pointed leaves.

	Each	10	100
4- 6 in., CT		\$.70	\$ 6.00
6- 8 in., CT		1.00	8.00

Buxus Sempervirens Rotundifolia (Round leaved English box)—A very dwarf compact, deep green box.

	Each	10	100
4- 6 in., CT		\$1.00	\$ 8.00

Buxus Sempervirens Suffruticosa (Dwarf English Box)—Much slower growing than the Sempervirens.

	Each	10	100
4- 6 in., CT		\$1.00	\$ 8.00

Callistemon Rigidus (Bottle Brush)—Beautiful as potted plant and fine for lawn specimen in lower South. Flowers with very dense spikes and extremely showy red stamens.

	Each	10	100
2¼ in. pot		\$1.00	\$ 7.50

Cinnamomum Camphora (Camphor Tree)—Fine ornamental and shade tree with aromatic leaves and wood. The leaves turn yellow to crimson before dropping off, just as the unfolding young leaves are a soft rose pink.

	Each	10	100
18-24 in., B. & B.	\$.50	\$4.50	
2- 3 ft., B. & B.75	6.00	
3- 4 ft., B. & B.	1.00	8.00	

Eleagnus Pungens—A very easily transplanted Eleagnus which grows well in either sun or shade.

	Each	10	100
6- 8 in., CT		\$.80	\$ 6.00
8-12 in., CT		1.00	8.00

Eleagnus Pungens Fruitlandii—A much larger leaf than the common Pungens, which grows much faster and is used as understock for grafting the variegated kinds.

	Each	10	100
6- 8 in., CT		\$.80	\$ 6.00
8-12 in., CT		1.00	8.00

Euonymus Carrieri—A low spreading variety which turns a bright red in autumn and is larger leaved and more upright than the Radicans.

	Each	10	100
6- 8 in., CT		\$.75	\$ 6.00
8-12 in., CT		1.00	8.00

Euonymus Japonicus (Japonica)—A beautiful evergreen with oval shaped leaves. It is used much like privet in the South because it shears well and stands either sun or shade.

	Each	10	100
6- 8 in., CT		\$.70	\$ 5.00
8-12 in., CT		1.00	6.00

Euonymus Radicans—Very hardy creeper with dark green leaves and used extensively in the South.

	Each	10	100
6- 8 in., CT		\$.75	\$ 6.00
8-12 in., CT		1.00	8.00

Ilex Cassine Angustifolia—Very narrow leaves. Produces berries abundantly when very young.

	Each	10	100
6- 8 in., CT		\$.70	\$ 6.00
8-12 in., CT90	7.50
12-18 in., CT		1.20	9.00

Ilex Cornuta Bufordi (Chinese Holly)—A very large berried holly with extremely glossy leaves. With from 1 to 3 spines and which is hardy to New Jersey. All our cuttings were taken from berrying plants and we guarantee them to bear.

	Each	10	100
2¼ in. pot, 6-8 in.		\$1.20	\$10.00
4- 6 in., CT80	6.00
6- 8 in., CT		1.00	8.00

Ilex Crenata Rotundifolia—A very hardy, small leaved holly, bearing small black berries with round boxwood-like leaves.

	Each	10	100
4- 6 in., CT		\$.60	\$ 5.00
6- 8 in., CT80	7.00
8-12 in., CT		1.20	8.00

Ilex Opaca Femina (American Holly)—A true American native, which is hardy everywhere. Our cuttings were selected from plants which had the glossiest foliage and from only those which bear heavy.

	Each	10	100
6- 8 in., CT		\$.80	\$ 7.00
8-12 in., CT		1.00	9.00

Ilex Vomitoria Femina (Yaupon)—This native southern broad-leave shears well and is used extensively in the South both for hedging and as specimen plants. Cuttings from female (berrying) plants only.

	Each	10	100
2¼ in. pots		\$1.00	\$ 8.00

Ilex Vomitoria Nobilis—A hardier kind than the Femina which has withstood severe freezes as far north as Oklahoma. It has smaller but glossier berries than the Femina. All plants guaranteed to bear.

	Each	10	100
2¼ in. pots		\$1.00	\$ 8.00

Illicium Anisatum (Anise tree)—Beautiful evergreen of upright habit, with large leaves, which are very aromatic when bruised.

	Each	10	100
6- 8 in., CT		\$.70	\$ 6.00
8-12 in., CT90	8.00
12-18 in., CT		1.20	11.00

Jasminum Floridum—Graceful, semi-erect evergreen with yellow flowers most of the summer. Hardy.

	Each	10	100
4- 6 in., CT		\$.50	\$ 4.00
6- 8 in., CT80	6.00
8-12 in., CT		1.00	8.00

Jasminum Primulinum—Similar to Floridum in habit but has much larger leaves and flowers.

	Each	10	100
6- 8 in., CT		\$.50	\$ 4.00
8-12 in., CT60	5.00
12-18 in., CTT		1.00	9.00

Laurocerasus Caroliniana (Cherry Laurel)—This familiar evergreen is one of the most widely used in the South.

	Each	10	100
6- 8 in., S		\$.50	\$ 4.00
8-12 in., S70	6.00

Ligustrum Coriaceum—Extremely dwarf ligustrum, with thick, dark crinkled leaves. The twisted appearance of this plant makes it very unusual.

	Each	10	100
4- 6 in., CT		\$.70	\$ 6.00
6- 8 in., CT		1.00	8.00

Ligustrum Lucidum Compactum—The well known wax privet so much in demand and increasing in popularity all the time.

	Each	10	100	1000
8-12 in., CT		\$.60	\$ 5.00	\$45.00
12-18 in., CT90	8.00	75.00
12-18 in., CTT, field grown..		1.70	15.00	
18-24 in., B. & B.	\$.50	4.00	37.00	
2- 3 ft., B. & B.60	5.50	47.00	

Ligustrum Lucidum Pyramidalis—Upright wax privet.

	Each	10	100	1000
8-12 in., CT		\$.60	\$ 5.00	\$45.00
12-18 in., CT90	8.00	75.00
12-18 in., CTT, field grown..		1.70	15.00	
18-24 in., B. & B.	\$.50	4.00	37.00	
2- 3 ft., B. & B.60	5.50	47.00	

Magnolia Fuscata (Banana Shrub)—A very popular evergreen because of its yellow flowers with a banana like fragrance.

	Each	10	100
6- 8 in., CT		\$1.00	\$ 8.00
8-12 in., CT		1.20	10.00

Nandina Domestica—Well-known, hardy, red-berried plants.

	Each	10	100
4- 6 in., S		\$.75	\$ 5.00
6- 8 in., S		1.00	7.00
18-24 in., B. & B.	\$.60	5.00	
2- 3 ft., B. & B.	1.00	8.00	

Osmanthus Fortunei (Tea-Olive)—A very hardy osmanthus with beautiful holly-like leaves and has fragrant flowers in late Fall.

	Each	10	100
2¼ in. pot		\$.75	\$ 6.00

Osmanthus Fragrans (Sweet Olive)—Blooms continually all winter long with a delightful fragrance. A very choice evergreen.

	Each	10	100
6- 8 in., CT		\$.75	\$ 6.00
12-18 in., CT		1.25	10.00

Photinia Glabra—Rapidly becoming more popular as it is better known. Stands shearing extremely well and its new growth is a brilliant scarlet working in well with other hedge plants and also as a specimen.

	Each	10	100
6- 8 in., CT		\$.75	\$ 5.00
8-12 in., CT		1.00	7.50
12-18 in., CT		1.75	10.00

Pittosporum Tobira (Japanese Pittosporum).

	Each	10	100
6- 8 in., CT		\$.75	\$ 5.00
8-12 in., CT		1.00	7.50

Pyracantha Formosana—The showiest of all pyracanthas, with the largest berries and is literally covered in the Fall. Its very profuse white flowers makes it also very attractive in the Spring.

	Each	10	100
6- 8 in., CT		\$.75	\$ 5.00
8-12 in., CT		1.00	7.50
12-18 in., CT		1.25	10.00

LINING OUT CONIFERS

All of our lining out conifers were rooted in the greenhouse and transplanted into beds in the full sun, making them hardier and easier to transplant, due to their splendid root systems.

Cunninghamia Lanceolata (Chinese Fir)

	Each	10	100
12-18 in., S		\$1.00	\$ 8.00
18-24 in., S		1.20	10.00
2- 3 ft., S		1.50	12.00

Juniperus Chinensis Femina (J. Sylvestris)—Reeve's Juniper. One of the most widely used conifers in the South, keeping a light green color all year round. Can be easily sheared into any shape and is perfectly hardy.

	Each	10	100
4- 6 in., CT		\$1.00	\$ 8.00
6- 8 in., CT		1.50	12.00

Juniperus Chinensis Japonica (J. Chinensis Procumbens)—Prostrate Japanese Juniper. This is one of the best low growing junipers, very hardy, it holds its blue green color Winter and Summer.

	Each	10	100
4- 6 in., CT		\$1.00	\$ 7.50
6- 8 in., CT		1.20	9.00

Juniperus Chinensis Pfitzeriana (Pfitzer's Juniper)—The most popular of the spreading junipers.

	Each	10	100
4- 6 in., CT		\$1.00	\$ 8.00
6- 8 in., CT		1.25	10.00

Juniperus Excelsa Stricta (Spiny Greek Juniper)—A very symmetrical, cone-shaped juniper. It is extremely hardy and very popular.

	Each	10	100
4- 6 in., CT		\$1.00	\$ 8.00
6- 8 in., CT		1.25	10.00

Podocarpus Sinensis (Japanese Yew)—The largest-leaved conifer known, its 2 to 3 inch leaves sometimes are a half inch wide. It is among the best for a sheared specimen or for a hedge because it can be pruned to any desired shape and grows well even under city conditions and likes either sun or shade.

	Each	10	100
4- 6 in., CT		\$.75	\$ 6.00
6- 8 in., CT		1.00	8.00
8-12 in., CT		1.25	10.00

Retinospora Ericoides—Fast growing cypress, upright in habit with feathery blue foliage. Very easily pruned into any shape.

	Each	10	100
4- 6 in., CT		\$.75	\$ 6.00
6- 8 in., CT		1.00	8.00

Retinospora Pisifera Plumosa Aurea—Thread-like leaves, tipped with gold during the growing season and very attractive.

	Each	10	100
4- 6 in., CT		\$.75	\$ 6.00
6- 8 in., CT		1.00	8.00

Retinospora Pisifera Squarrosa Veitchi—A rapid, upright grower with handsome silver foliage, shears easily and very attractive.

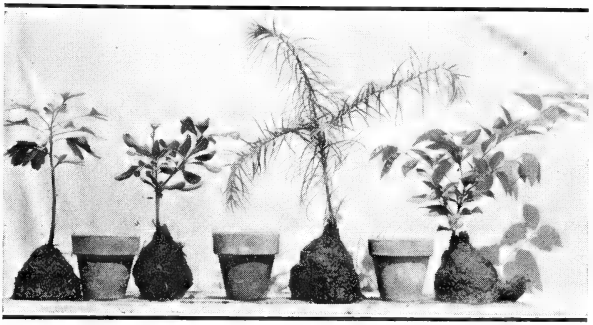
	Each	10	100
4- 6 in., CT		\$.75	\$ 6.00
6- 8 in., CT		1.00	8.00

Thuja Orientalis Aurea Nana (Berchmann's Golden Arborvitae)—Well known dwarf golden arborvitae.

	Each	10	100
4- 6 in., CT		\$1.00	\$ 8.00

Thuja Orientalis Bakeri—Upright grower, holding a very compact outline, with a clean green foliage. Our plants have been grown in the full sun and are well hardened with splendid root systems.

	Each	10	100
4- 6 in., CT		\$1.00	\$ 8.00
6- 8 in., CT		1.25	10.00



8-12" Liners *Ginkgo Pittosporum Cunninghamia*
 & *Ligustrum Lucidum* shown with 3" Pots

DECIDUOUS, POTTED AND MISCELLANEOUS PLANTS

Allamanda Hendersonii—An evergreen vine which is grown under glass, as it is tender, and has large trumpet-shape, golden yellow flowers. This is often found in greenhouses because it produces abundant flowers throughout the summer.

	Each	10	100
2¼ in., pot		\$1.00	\$ 6.00

Duranta Plumieri (Golden Sky-Flower)—Beautiful southern shrub with lilac flowers and large yellow berries in clusters, giving it an odd and attractive appearance.

	Each	10	100
2¼ in., pot		\$1.00	\$ 6.00

Ficus Repens (climbing fig)—This vine is widely used to cover walls and chimneys.

	Each	10	100
2¼ in., pot		\$1.00	\$ 6.00

Ginkgo Biloba (Maiden Hair Tree)—The only tree now in cultivation which is traced directly back to prehistoric times.

	Each	10	100
6- 8 in., S		\$.60	\$ 5.00
8-12 in., S75	6.00
12-18 in., S		1.00	8.00

Hibiscus—Single giant scarlet.

	Each	10	100
2¼ in., pot		\$1.00	\$ 6.00

Double red and pink mixed only.

	Each	10	100
2¼ in., pot		\$1.50	\$10.00

Gerbera—Diener's Hybrid—Transvaal or African Daisy—One of the most widely used of all cut flowers, the year 'round.

		10	100
3ys. old, blooming size clumps		\$2.00	\$15.00

Hydrangea Otaksa—This variety is the true southern hydrangea planted so extensively in the South. In acid soil it produces blue flowers and in alkaline soil pink flowers, a very large size.

	Each	10	100
Small field grown clumps		\$2.50	\$20.00

Ivy—Hahn's self-branching

	Each	10	100
2¼ in., pot		\$1.00	\$ 8.00

Jasminum Gracillimum—A tender climber with beautiful waxy green leaves and fragrant pin-wheel shaped flowers, an inch across, in clusters. Fine for corsage work.

	Each	10	100
2¼ in., pot		\$1.50	\$10.00

Laegerstromia Indica—Watermelon red. This is the outstanding color and the most popular of all crepe myrtles and the one which is planted widely throughout the Deep South.

	Each	10	100
12-18 in., CT		\$1.00	\$ 8.00
18-24 in., CT		1.50	12.50
2- 3 ft., CT		1.75	15.00
3- 4 ft., CT		3.00	25.00
4- 5 ft., CT		4.00	35.00

Prunus Yedoensis (Somei-Yoshino)—Japanese flowering cherry. One of the most popular varieties of this beautiful tree. A very rapid grower with slender, graceful branches. Has 3 to 6 flowers in a cluster, which are pinkish white and slightly fragrant. Blooms heavily before new growth begins in the Spring.

	Each	10	100
3 in., pot		\$2.75	\$22.50

Punica Granatum (Flowering Pomegranate)

	Each	10	100
2¼ in., pot		\$1.00	\$ 6.00

Trachelospermum Jasminoides—Confederate jasmine, an evergreen vine with wax-like leaves and with white fragrant flowers one inch across. When in bloom it is the most fragrant plant known.

	Each	10	100
2¼ in., pot		\$1.00	\$ 6.00

MEMORANDA

MEMORANDA

Wholesale Price List

Fall 1941

Spring 1942

MOBALA NURSERIES

MOBILE, ALABAMA

Long Distance Phones

Day—Mobile, Ala. Dexter 3105-J

Nite—Mobile, Ala. Belmont 2156

INDEX

	PAGE
Allamanda	22
Azaleas	6-9
Abelia	17
Berberis	17
Buxus	17-18
Callistemon	18
Camellias	10-15
Camellia Susanqua	15
Cinnamomum	18
Conifers	20-21
Duranta	22
Eleagnus	18
Ficus	22
Flowering Cherry	23
Flowering Pomegranate	23
Gardenias	16-17
Gerbera	22
Ginkgo	22
Hibiscus	22
Hydrangea	22
Ilex	18-19
Illicium	19
Ivy	23
Jasminum	19
Jasminum gracillimum	23
Laegerstromia	23
Laurocerasus	19
Legistrum	19-20
Magnolia	20
Nandina	20
Osmanthus	20
Photinia	20
Pittosporum	20
Pyracantha	20
Trachelosperum Jasminoides	23
Legends Key	17

Please Note

Prices in this list cancel all previous ones and are subject at any time to change without notice.

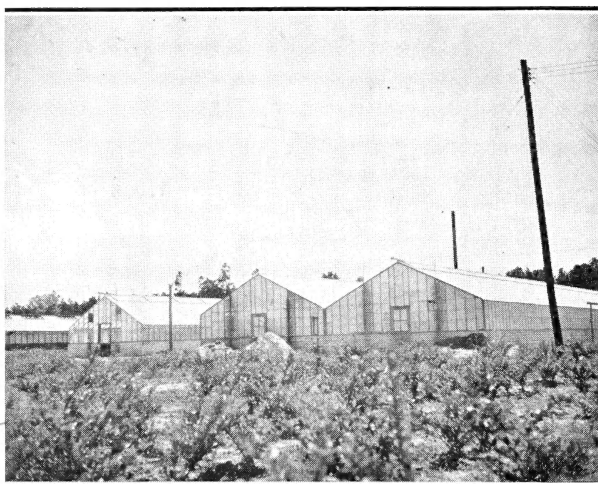
AZALEAS ■ CAMELLIAS
GARDENIAS

In Lining Out and Specimen Sizes



BROAD LEAVED EVERGREENS
CONIFERS

In Excellent Lining Out Sizes



Propagating Houses

ASSOCIATE



MEMBER

MOBALA NURSERIES

Mobile, Alabama